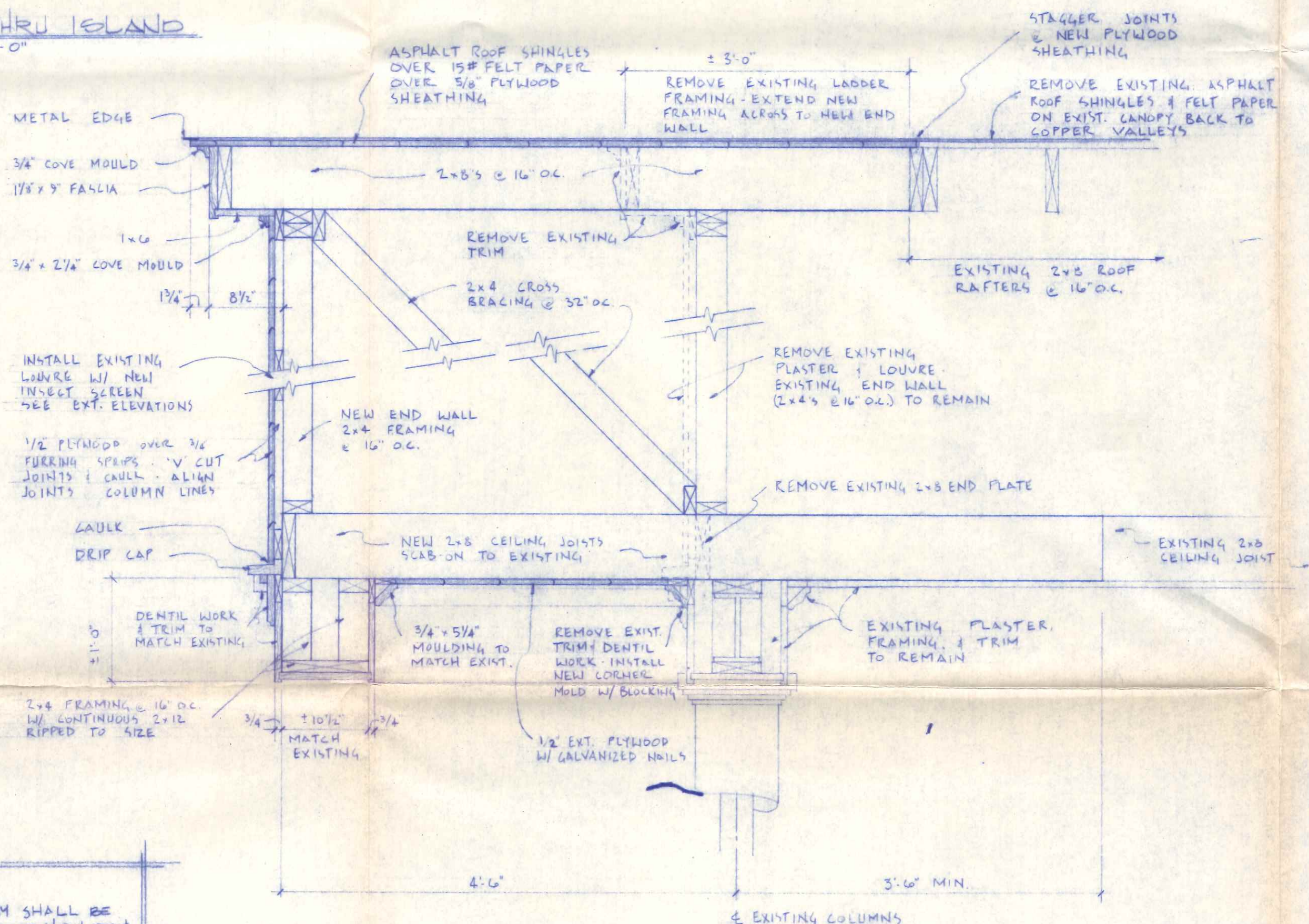
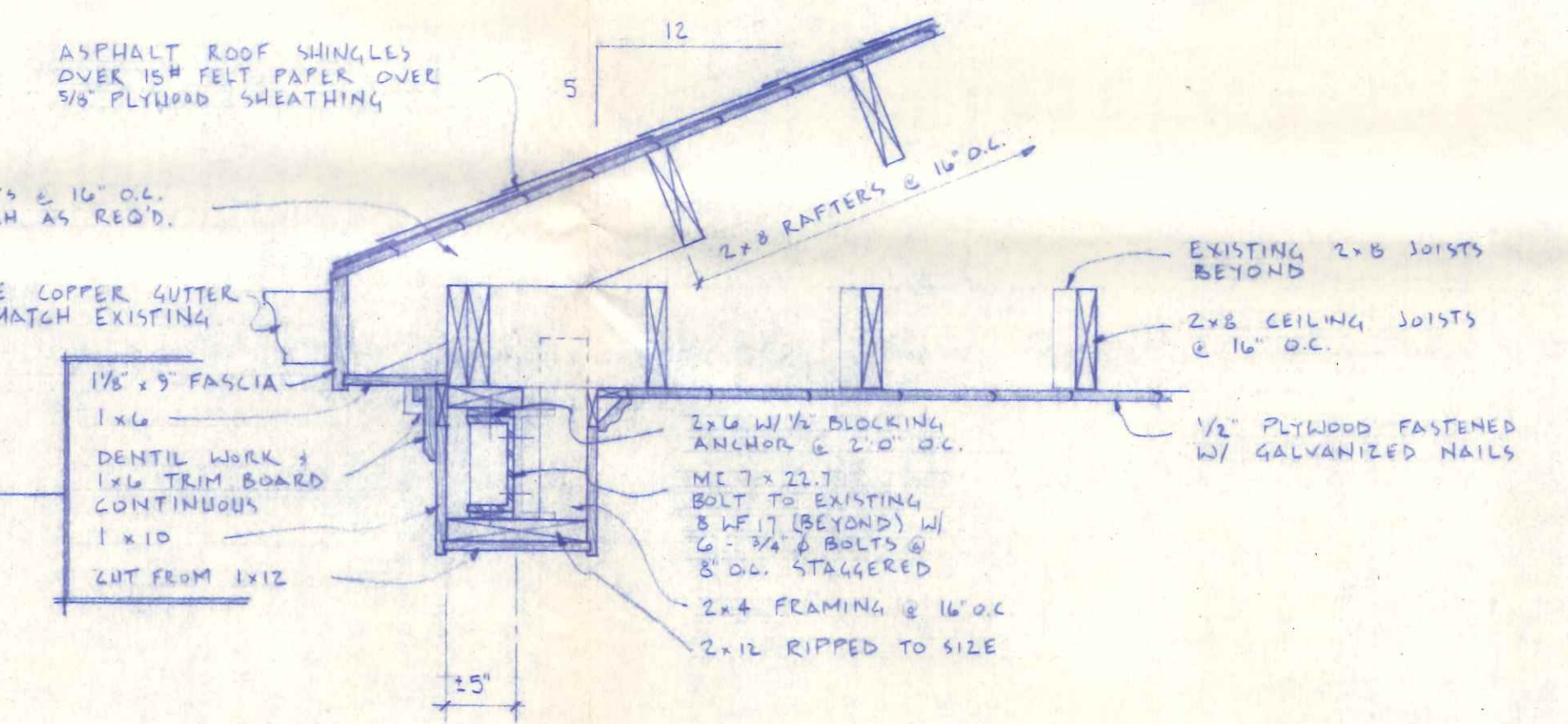


SECTION THRU ISLAND
SCALE: 3/4" = 1'-0"



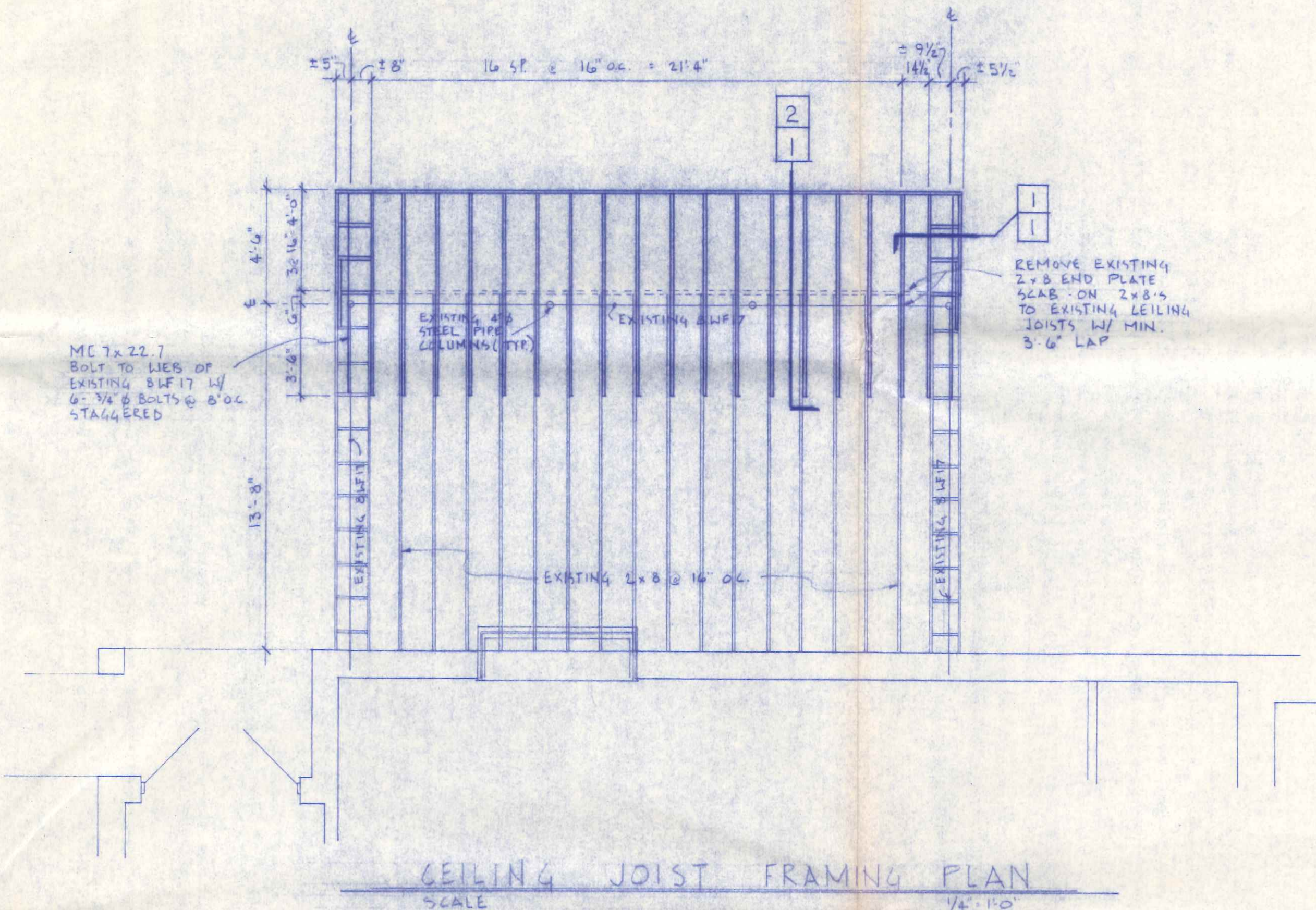
2 SECTION THRU CANOPY GABLE
SCALE 1" = 1'-0"

NOTE:
ALL MILLWORK TRIM SHALL BE WHITE PINE OR REDWOOD IN SHAPES & SIZES TO MATCH EXISTING

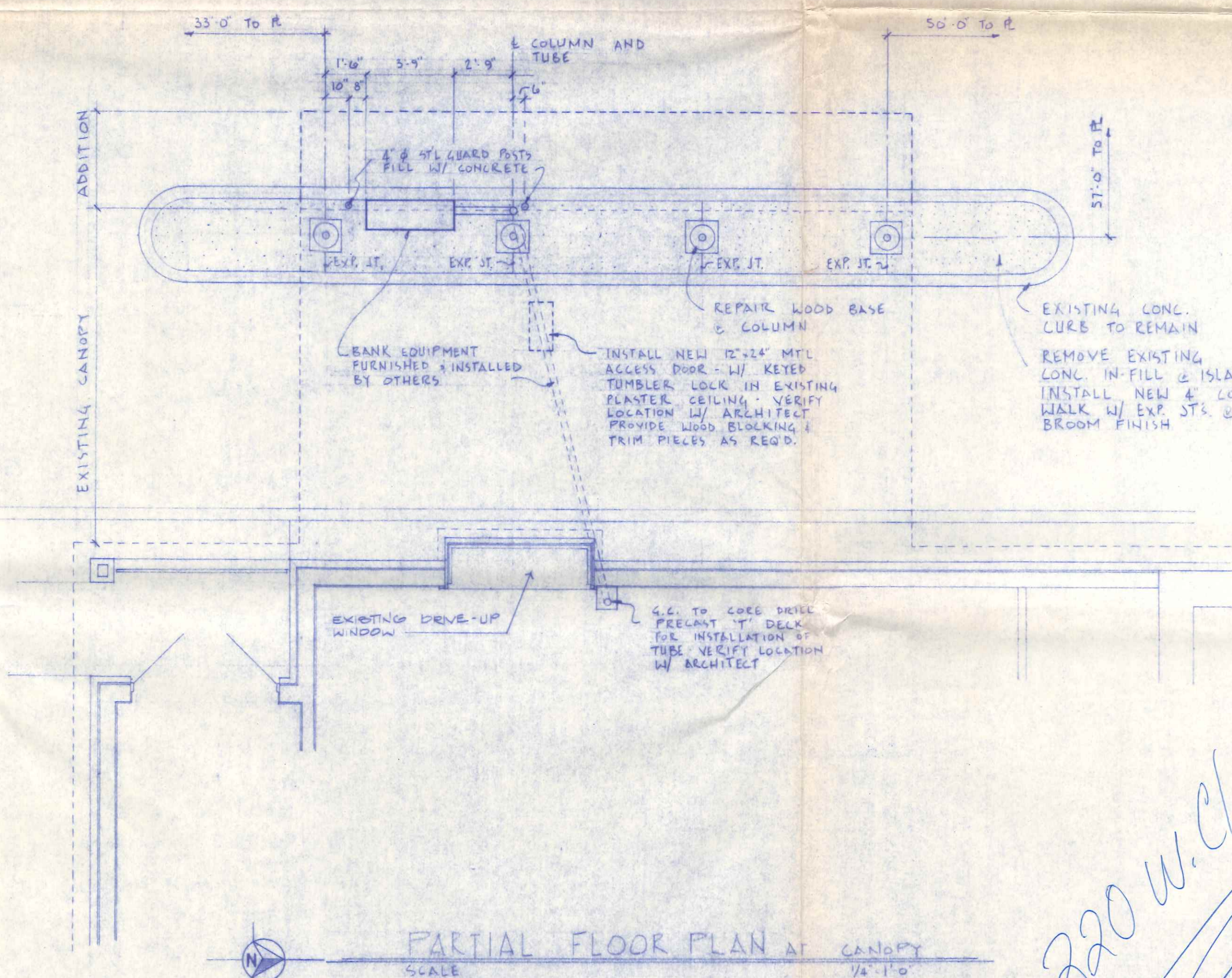


1 SECTION THRU CANOPY EAVE
SCALE 1" = 1'-0"

NOTE:
INFORMATION GIVEN FOR REFERENCE ONLY - TRIM & MOLDINGS SHALL MATCH EXISTING



CEILING JOIST FRAMING PLAN
SCALE 1/4" = 1'-0"



PARTIAL FLOOR PLAN AT CANOPY
SCALE 1/4" = 1'-0"



Revisions

NO.	DESCRIPTION

DRIVE-UP CANOPY ADDITION
HOME SAVING & LOAN ASSOCIATION
CLINTON & HUDSON, OHIO
CLINTON & HUDSON, OHIO

- FLOOR PLAN
- FRAMING PLAN
- SECTIONS

date: 8-22-88
commission: 88-1086
drawn: R. ELLIOTT
checked:
sheet
1
of THREE

220 W. Clinton

EQUIPMENT NOTES:

GENERAL

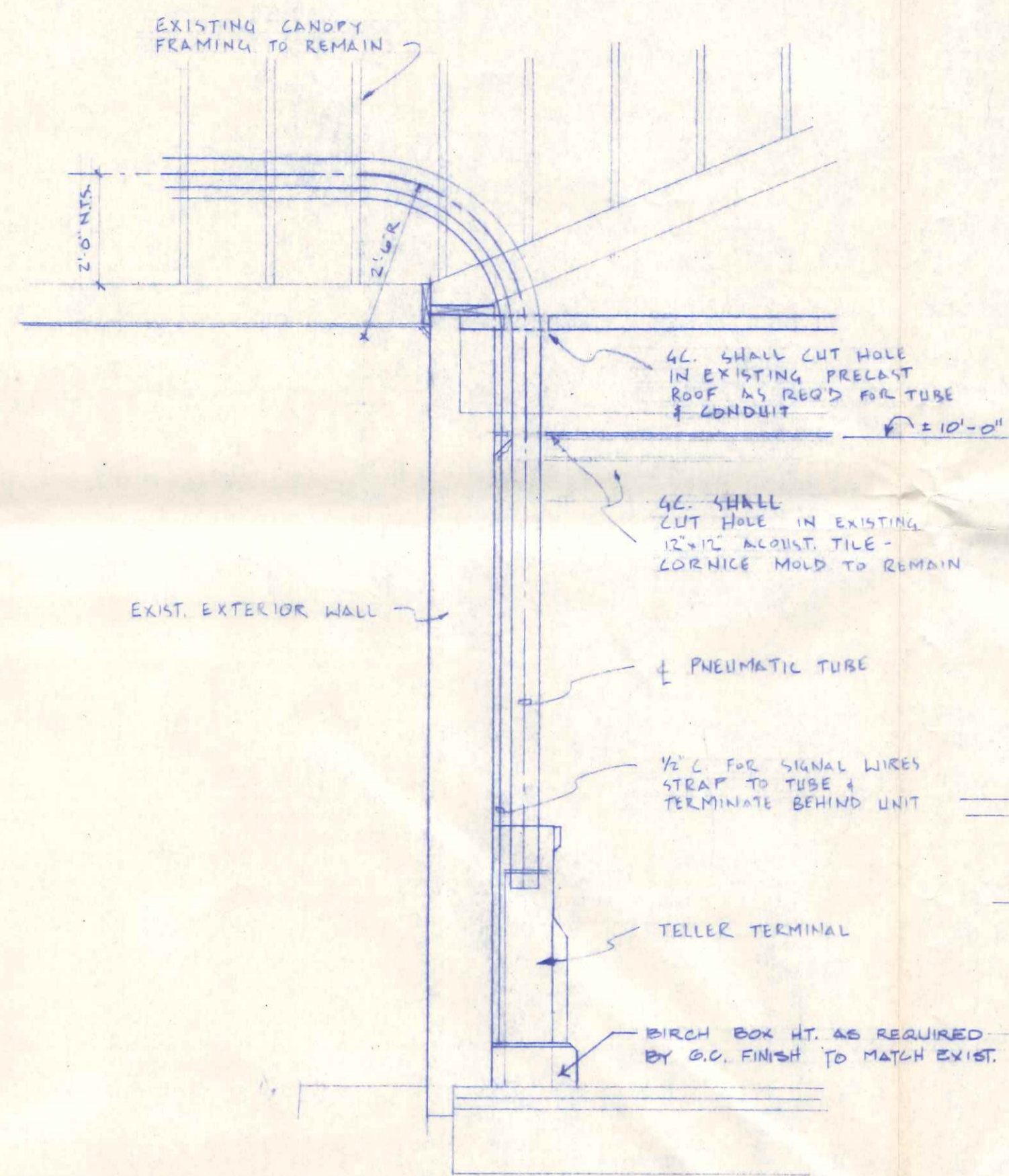
The following items are to be performed or provided by the General Contractor:

1. All applicable building codes and O.S.H.A. requirements shall be adhered to.
2. Island surface must be level and smooth at Customer Unit Area.
3. All openings, sleeves, and access panels as required in affected area of structures.
4. Canopy, islands, walkways and guard posts.
5. After tube is installed, finish all openings around tube including; grouting, patching, waterproofing, painting, sealing and acoustical treatment as required.
6. Provide access to install tubing and to system items shown on Mosler drawings.
7. All work performed by the General Contractor and Electrical Contractor that pertains directly to the Mosler drive-in facilities shall be coordinated with Mosler.
8. Due to the accuracy required for the positioning of the Teller Terminal(s) and Customer Unit(s), the following is required before the start of the installation of the tubing:
 - a. Finish floor in Tellers area. Finish exterior wall with opening prepared for drive-in window or vision window.
 - b. Openings for pneumatic tube(s) through walls, ceilings and canopy as required.
 - c. Positioning and/or forming of Customer Unit Island(s).
9. Mosler shall not be required to install the equipment prematurely, and not until construction has progressed sufficiently to afford reasonable protection against weather conditions, and other construction hazards. Such time shall be determined solely by Mosler.

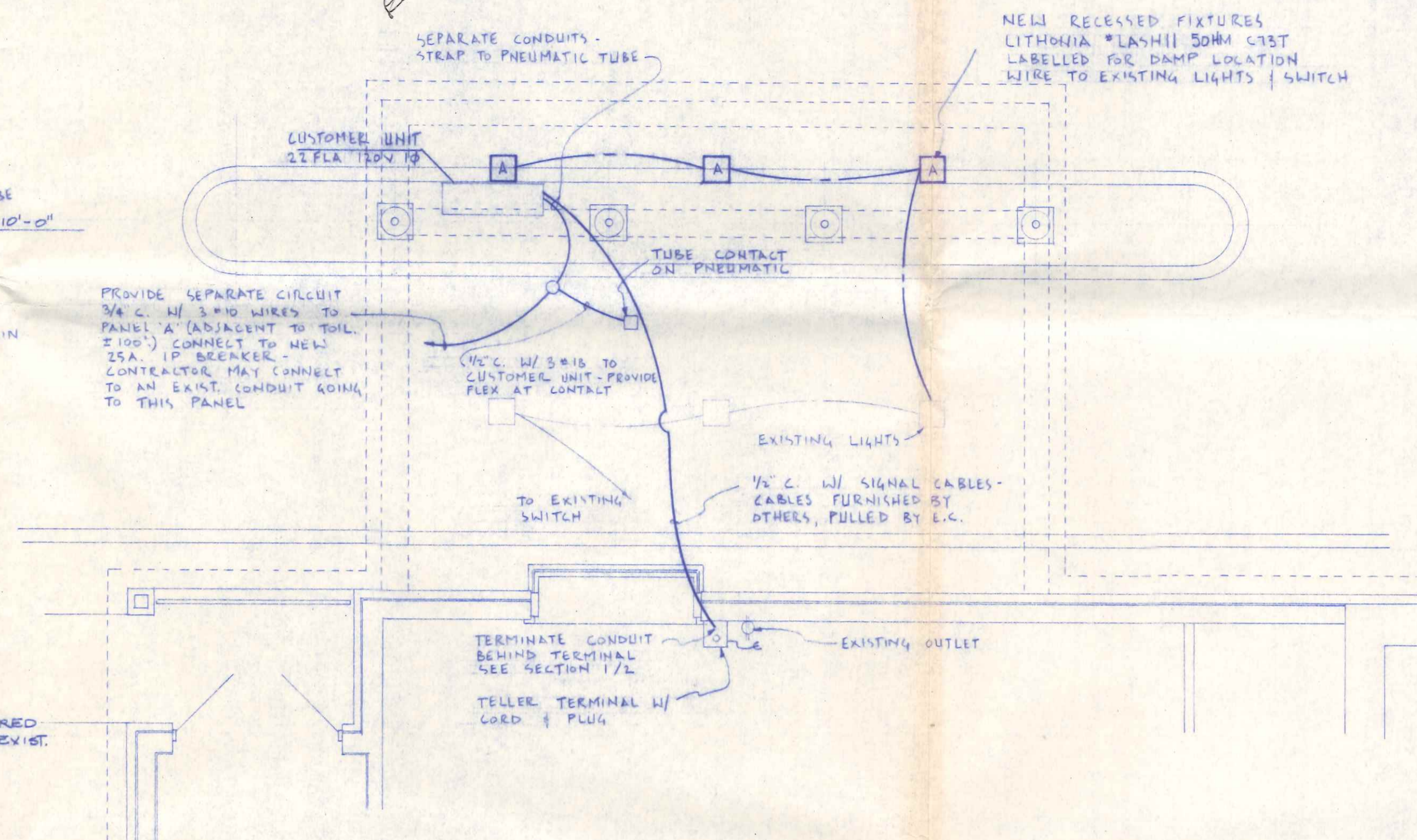
ELECTRICAL:

BASIC REQUIREMENTS

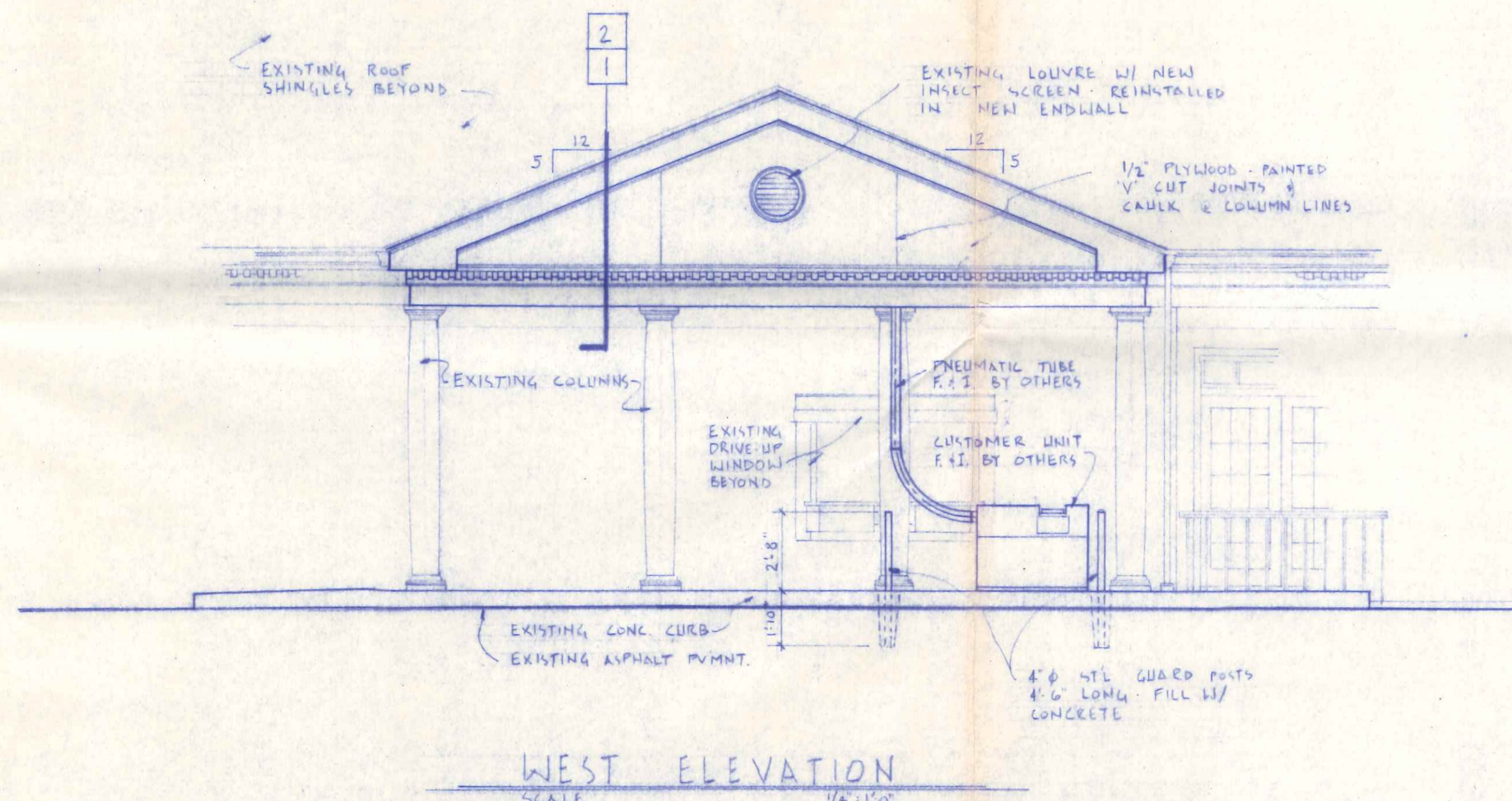
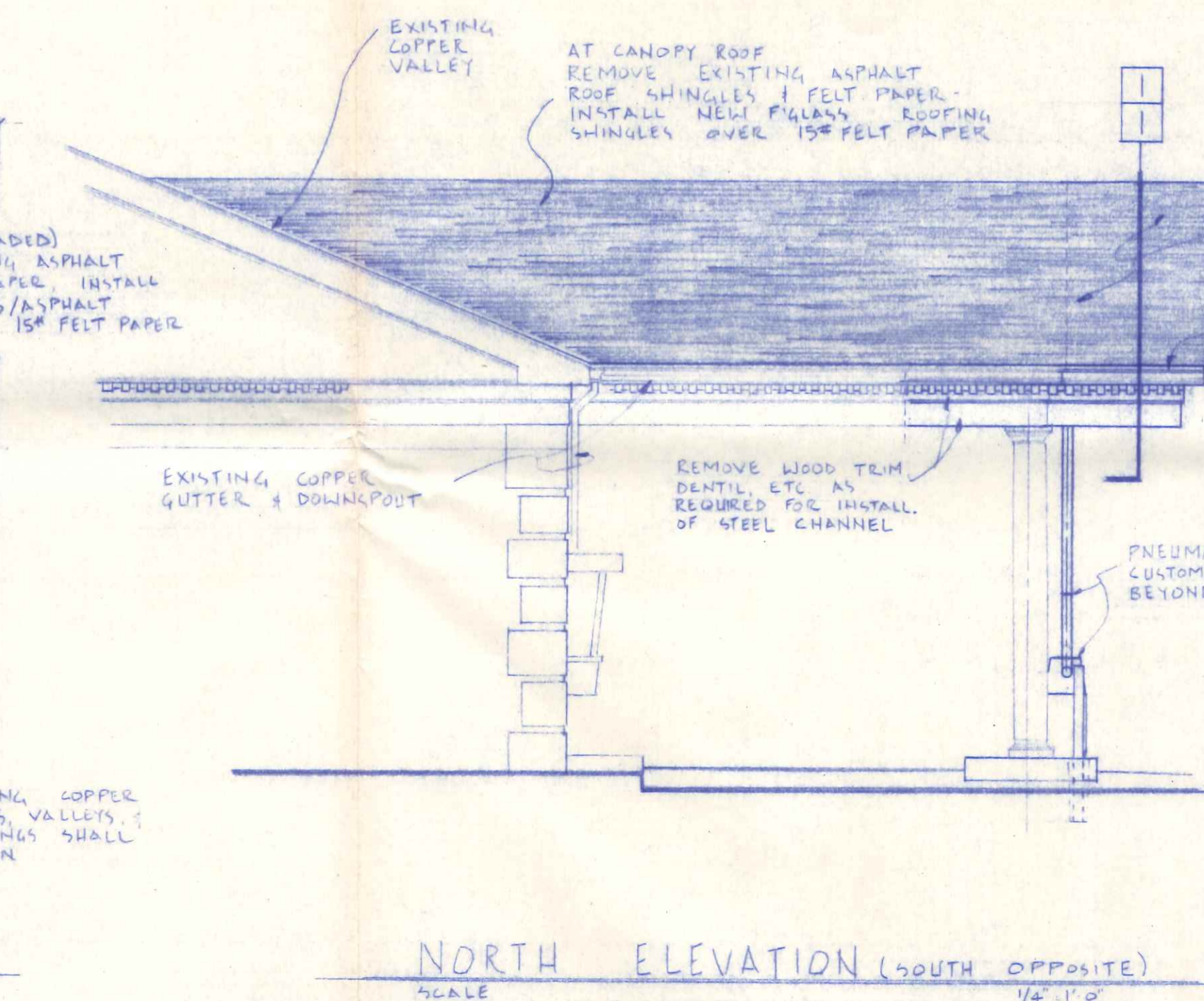
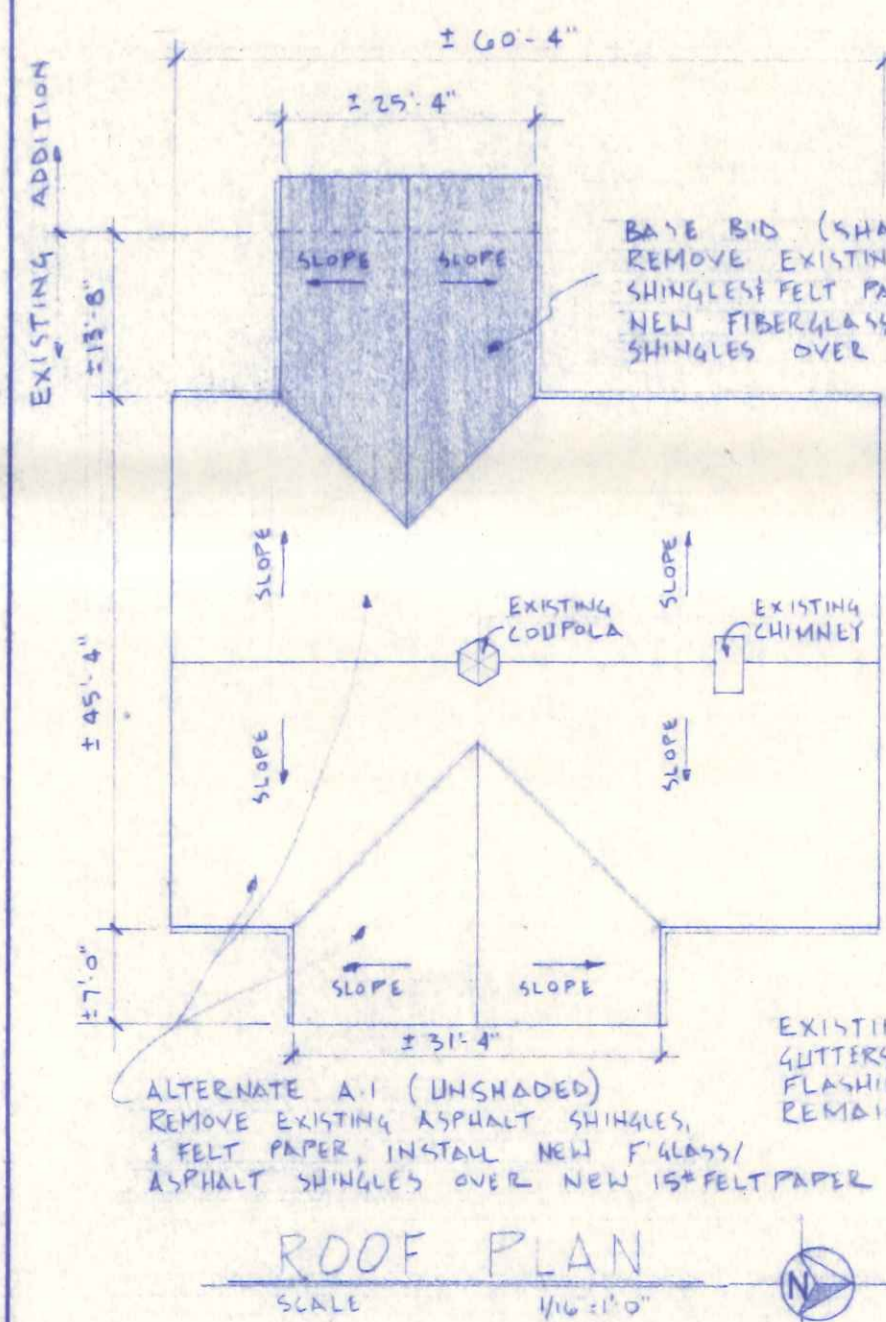
1. Power consumption data (for each system) 120 volts single phase 50/60 Hz. for controls, blower and equipment connected to the Customer Unit full load 22 amps, 120 volt receptacle for audio and Teller Units 2 amps.
2. Power voltage drop at each customer unit must not exceed 3% of the panel reading.
3. Conductor sizes shown are based on max. 60 ft. wire run lengths from the panel to the Customer Units to provide the power within the voltage drop limitations.
4. Conduit sizes are based on thw or thwn type conductors, wire sizes and the number of conductors.
5. Conduits as shown on schematic diagram are for general clarification and not intended to be representative of field conditions. The combining of conductors into single conduits, addition of junction boxes etc. to satisfy project conditions is to be determined and furnished by the electrical contractor, provided:
 - a. Individual circuits are provided for each system.
 - b. Installation conforms to the national electrical code and requirements of city and state ordinances.
 - c. Power requirements to each system are satisfied.
 - d. Power wires cannot be in the same conduit with the control cable.
6. The following electrical work related to the drive-up facility will be accomplished by Mosler to the extent indicated:
 - a. Furnish Signal Cable
 - b. Connection of signal cable at Teller and Customer Units.
7. The following electrical work related to the drive-up facility will not be by Mosler.
 - a. All conductors, conduits, panels, boxes and wiring devices.
 - b. Sources, distribution and connection of power to operate Mosler's equipment.
 - c. Pulling of signal cable(s) (furnished by Mosler) into conduit(s) allow 6 ft. slack on each end.
 - d. Interior and exterior lighting and signs.



SECTION EQUIPMENT DETAIL
SCALE: 1/2" = 1'-0"



PARTIAL ELECTRICAL PLAN
SCALE: 1/2" = 1'-0"



revisions

NO.	DATE	DESCRIPTION

DRIVE-UP CANOPY ADDITION
HOME SAVING & LOAN ASSOCIATION
CLINTON & HOODLAIN NAPOLEON, OH

- EXTERIOR ELEVATIONS
- ELECTRICAL PLAN
- EQUIPMENT DETAILS
- ROOF PLAN

date: 8-22-88
commission: 88-1086
drawn: R. ELLIOTT
checked:
sheet

DRAWING 80-24 2/11/88